



**TUBE TOOLS**

## FLEXIBLE SHAFTS

(Dry Application - Steel Casing) for tubes 1" (25.4mm) I.D. and UP



FLEXIBLE SHAFT

Tube I.D. Range		Flexible Shaft Model No.	Flexible Shaft Length		Steel Casing O.D.		Shaft Core O.D.		Tool End Thread
MM	INCH		FEET	MTRS	MM	INCH	MM	INCH	
25.4 and up	1 and up	BFSC-706-12	12	3.7	22.2	7/8	12.7	1/2	1/2 - 12F
		BFSC-706-25	25	7.6					
		BFSC-706-35	35	10.7					
		BFSC-706-45	45	13.7					

## FLEXIBLE SHAFTS REPAIR / MAINTENANCE

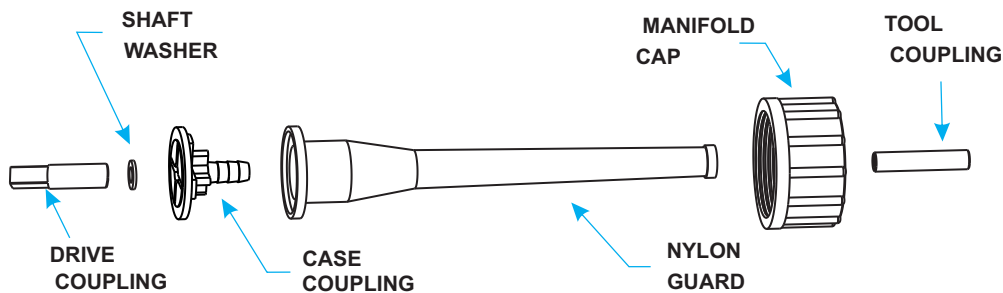
for NFSC-701, NFSC-702, NFSC-703 NFSC-704, NFSC-705 Flexible Shafts.

### SHAFT REPAIR COUPLINGS

The life of flexible shafts can be extended by proper use and maintenance. If a flexible shaft should break at either end it can be easily repaired by cutting off the end portion and using a shaft repair tool to attach a coupling onto the cut shaft.

Flexible Shaft Model	NFSC 701 / 702 / 703 / 705
Tool Coupling	TC-703
Casing Nipple	CN-703
Manifold Cap	MC-703
Shaft Washer	9/16x7/8
Drive Coupling	DC-703
Rubber Gasket	RG-703

For, NFSC-701, NFSC-702, NFSC-703, NFSC-704, NFSC-705 FLEXIBLE SHAFT



Flexible Shaft

## MODEL BPC4-45 CHILLER TUBE CLEANING SYSTEM:

Model No. BPC4-45 chiller tube cleaning system uses a 3/4 HP motor for tougher deposits. Single direction foot switch is provided for cleaning internally enhanced tubes.

### CONTENTS:

- BPC-4 Tube cleaners-1
- Nylon Brush (Specify Size)- 25
- Repairing kit for flexible shaft NFSC-703 consisting of 4 drive couplings, 4 tool end couplings, 1 crimping tool with punch, 1 flexible shafts lubricator and 2 bottles of lubricant Tubes.
- NFSC-703-45 Flexible Shafts-2
- Single Direction Air Foot Switch-1



BPC-4 Tube Cleaners



Flexible Shaft



Crimping Tool



Repair Kit